



## IN THIS ISSUE:

### Member Spotlight:

*Yolanda Flores*

*Jimmy Moore*

*Alecia Sturgeon*

### Agency Spotlight:

*FosterAdopt Connect*

### Important Dates

### Office Hours

## President: Yolanda Flores

### How has LCS impacted your life?

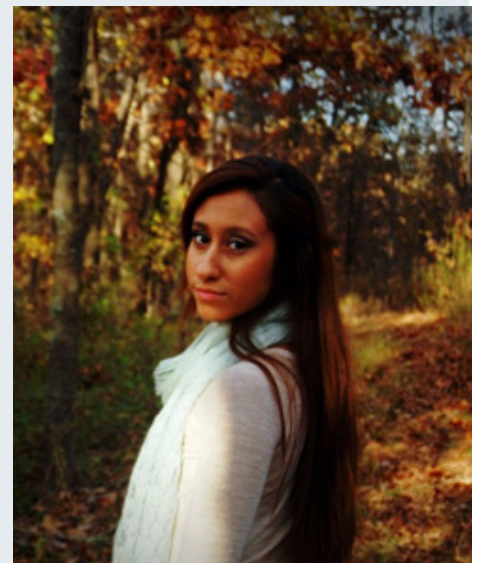
LCS has connected me to a lot of passionate people; both from the agencies and from my other fellow LCS members who are passionate about what they do in their agencies. It is amazing seeing the impact that all of these agencies have the potential to do, but it is even more astonishing to see the great opportunity that we have to participate in all of these great causes.

### What advice would you give to new LCS members?

Do not be afraid to try something new, even if that means you are not sure how things will go with your agency. There is always something positive you can do!

### What do you look forward to doing in your new LCS officer position?

I am really excited for brainstorming with the team for some great ideas to implement into this wonderful program! I hope that my efforts will help bring some new and fun experiences to LCS. I am also always excited to learn with the team and to learn more from LCS.



## Historian: Jimmy Moore

---

### How has LCS impacted your life?

LCS has allowed me to open my eyes to the complexities of the Springfield community. Through face-to-face interactions with some of the most disadvantaged and forgotten segments of our society, I have become motivated to be more than just a student. I now strive to be a change-maker and to leave Springfield and my community better than when I got here.



### What advice would you give to new LCS members?

Come into this program with open eyes and open hearts. I am a Political Science major and was unsure of what nonprofit to work with and I ended up with the AIDS Project of the Ozarks (APO). This changed my life, and perspective, forever. I now know and love public health in a way I didn't before and will definitely lead my life differently from working there.

### What do you look forward to doing in your new LCS officer position?

I look forward to showcasing all the great work we do to our peers on campus and the Ozarks community. LCS is a beacon for goodwill and being that change we want to see in society, it is about time everybody got to see that.

## Recruitment Director: Alecia Sturgeon

---



### How has LCS impacted your life?

LCS has made me love doing community service even more, getting to see and talk to the people that we get to impact and seeing the smiles on their faces means so much. LCS has let me grow so much as a person too; I get to learn new skills and improve the skills I already have and get to learn from and meet so many incredible people.

### What advice would you give to new LCS members?

My advice would be: the small things matter too, a smile or asking someone how was their day could mean a lot more than you think.

### What do you look forward to doing in your new LCS officer position?

I look forward to getting new people interested in joining LCS and getting to help our program grow and become even more amazing and for our program to help so many more non-profit organizations as we grow.

## Agency Spotlight

Answers courtesy of Danielle Tomasi,  
Programs Director at SWMO.



### What does FosterAdopt Connect SWMO do?

FosterAdopt Connect SWMO specializes in solving problems for kids and families involved in and affected by the child welfare system. Their mission is “to provide foster and adopted children a stable, loving and nurturing family environment by support and advocacy for abused and neglected children and the families caring for them.”

### Who does FosterAdopt Connect impact and how?

We serve children affected by the foster care system and families who care for them. We want to support them and help nurture their environment to create a family like atmosphere.

### What is your favorite part about FosterAdopt Connect? Why do you love it?

I love that we work together to find ways to help to stabilize children. We often have multiple programs working together to wrap services around a child and their families. We want all children, no matter what to feel the comforts of a loving family. The dedication and commitment of everyone who works for FAC is evident in the way that we work together to fill gaps in services for children.

### How did your last LCS Member, Ereyonna Kyles, impact your organization as an LCS member?

Ereyonna was instrumental in getting our Volunteer services more streamlined. She was also able to help launch our data base system in our direct services department (aka Sammy’s Window)

*If you would like to donate support to FosterAdopt Connect, join them for their Road To Home event.*



## **Important Dates:**

August 18th	8:00am-1:00pm	Member Orientation, PSU 313
August 23rd	5:00-8:00pm	LCS Agency/Member Mixer, Meyer Alumni Center
September 5th	6:00-7:00pm	Monthly Meeting, Strong 204
October 3rd	6:00-7:00pm	Monthly Meeting, Strong 204
November 7th	6:00-7:00pm	Monthly Meeting, Strong 204
December 5th	6:00-8:00pm	Holiday Party (Location TBA)

## **LCS Advisor Office Hours:**

Monday 9-5  
Tuesday 9-3:30  
Wednesday 9-1  
Friday 2-3:30

### **Contact:**

Megan Prather  
Phone: 417-836-4903  
Email: [lcs@missouristate.edu](mailto:lcs@missouristate.edu)

